



TEXAS A&M UNIVERSITY

**Veterinary Medical
Teaching Hospital**

WE'RE HIRING!

AT THE **TEXAS A&M VMTH**

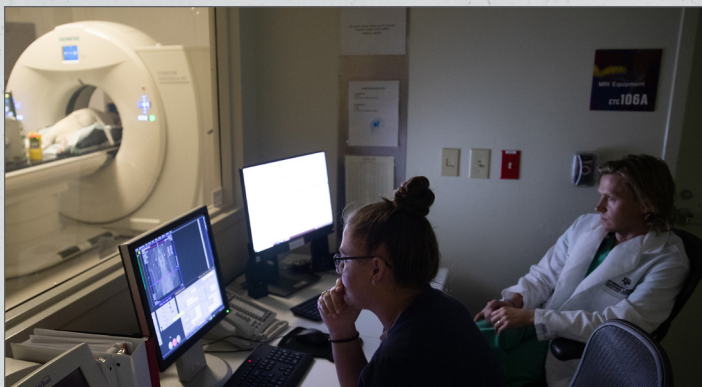
The Texas A&M School of Veterinary Medicine & Biomedical Sciences is recruiting two positions to support our integrated oncology service. Please visit the links below to learn more about our opportunities and apply.

- **Clinical Assistant/Associate/Full Professor in Medical Oncology**
(<https://apply.interfolio.com/112554>)
- **Tenure-track Assistant/Associate/Full Professor in Medical Oncology**
(<https://apply.interfolio.com/111412>)

Please contact Dr. Sharon Kerwin, search committee chair (vscsadmin@tamu.edu or 979-845-2351), if you have any questions or would like more information.

Texas A&M University (www.tamu.edu) is one of the largest universities in the United States, with more than 73,000 students from all 50 states and 124 countries. It is supported by a multibillion-dollar endowment (ranked 4th among public universities) and is a top-20 research enterprise. Take a virtual tour at our Veterinary & Biomedical Education Complex (VBEC) (<https://youtu.be/jXHyhGmGm9M>), Veterinary Medical Teaching Hospital (https://youtu.be/DnL_lokYQY), teaching labs (https://youtu.be/DnL_lokYQY), and research and graduate studies (<https://youtu.be/0kSMKOyrWpE>).

vethospital.tamu.edu/employment



ABOUT THE VMTH

Texas A&M's Veterinary Medical Teaching Hospital (VMTH) is a spacious facility with sophisticated diagnostic and patient care equipment, including color-flow Doppler ultrasonography, 4D transthoracic and transesophageal echocardiography, digital fluoroscopy, scintigraphy, 40 slice CT, 3T MRI, video endoscopy, nuclear imaging, acid-base/blood-gas analyzers, oxygen and inhalant gas analyzers, standard coagulation as well as TEG and PFA analyzers, intraoperative cell salvage transfusion equipment, phacoemulsification system, high-flow oxygen therapy, and an ICU telemetry system.

The VMTH has capable personnel including more than 80 specialty faculty, 50 house officers, 15 anesthesia technicians including VTS and licensed technicians, talented ICU technicians, an active multidisciplinary interventional radiology service, two in-house pharmacists with compounding capability, and a clinical trials coordinator.

ABOUT THE SCHOOL

Texas A&M School of Veterinary Medicine and Biomedical Sciences (vetmed.tamu.edu) is in the community of Bryan-College Station (BCS), TX, which is a growing and diverse college town with a wide variety of cultural and recreational opportunities, excellent schools, and a relatively low cost of living. BCS is centered in the Texas Triangle, a megaregion consisting of the state's 5 largest cities, all of them with international airports (Houston, Dallas, Fort Worth, Austin, and San Antonio). We're also a few hours from beaches of the Gulf of Mexico, as well as fishing, diving, hiking, and camping opportunities. You can learn more using these links:

- Flower Garden Banks National Marine Sanctuary <https://flowergarden.noaa.gov/visiting/welcome.html>
- Texas Gulf Surfing Association <https://www.surftgsa.org/>
- Texas State Parks <https://tpwd.texas.gov/state-parks/parks-map>
- Enchanted Rock State Natural Area <https://tpwd.texas.gov/state-parks/enchanted-rock>
- Chamber of Commerce Bryan-College Station <https://www.bcschamber.org/>
- Beaches of Galveston (<https://www.galveston.com/>), Matagorda (<https://matagordabeach.org/>), and South Padre Island (<https://www.sopadre.com/>)



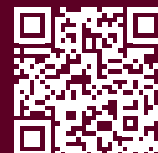
TEXAS A&M UNIVERSITY

**Veterinary Medical
Teaching Hospital**

Scan the QR codes for more
information about the
Medical Oncology jobs.



Clinical Assistant/
Associate/Full Professor



Tenure-track Assistant/
Associate/Full Professor